

DEC2 Polyclonal Antibody

Description

Product type	Primary Antibody
Code	BT-AP02554
Host	Rabbit
Isotype	IgG
Size	20ul, 50ul, 100ul
Immunogen	The antiserum was produced against synthesized peptide derived from human BHLHB3. AA range:1-50
Mol wt	50498
Species reactivity	Human, Mouse, Rat
Clonality	Polyclonal
Recommended application	WB, IHC-p, ELISA
Concentration	1 mg/ml
Full name	44532 Antibody
Synonyms	BHLHE41; BHLHB3; DEC2; SHARP1; Class E basic helix-loop-helix protein 41; bHLHe41; Class B basic helix-loop-helix protein 3; bHLHB3; Differentially expressed in chondrocytes protein 2; hDEC2; Enhancer

This product is for research use only, not for use in human, therapeutic or diagnostic procedure.

Background

BHLHE41 (basic helix-loop-helix family member e41) encodes a basic helix-loop-helix protein expressed in various tissues. The encoded protein can interact with ARNTL or compete for E-box binding sites in the promoter of PER1 and repress CLOCK/ARNTL's transactivation of PER1. BHLHE41 is believed to be involved in the control of circadian rhythm and cell differentiation. Defects in this gene are associated with the short sleep phenotype.

Recommended Dilution

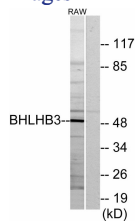
WB: 1: 500 - 1: 2000

IHC: 1: 100 - 1: 300

ELISA: 1: 40000

Not yet tested in other applications.

Images



Western blot analysis of lysates from RAW264.7 cells, using BHLHB3 Antibody. The lane on the right is blocked with the synthesized peptide.

Storage

-20°C for one year