

DEF-3 Polyclonal Antibody

Description

Product type	Primary Antibody
Code	BT-AP02559
Host	Rabbit
Isotype	IgG
Size	20ul, 50ul, 100ul
Immunogen	The antiserum was produced against synthesized peptide derived from human RBM6. AA range:991-1040
Mol wt	128644
Species reactivity	Human, Mouse
Clonality	Polyclonal
Recommended application	WB, IHC-p, IF, ELISA
Concentration	1 mg/ml
Full name	DEF-3 Antibody
Synonyms	RBM6; DEF3; RNA-binding protein 6; Lung cancer antigen NY-LU-12; Protein G16; RNA-binding motif protein 6; RNA-binding protein DEF-3

This product is for research use only, not for use in human, therapeutic or diagnostic procedure.

Background

Specifically binds poly(G) RNA homopolymers in vitro.

Recommended Dilution

WB: 1: 500 - 1: 2000

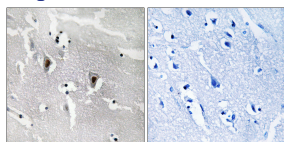
IHC: 1: 100 - 1: 300

IF: 1: 200 - 1: 1000

ELISA: 1: 20000

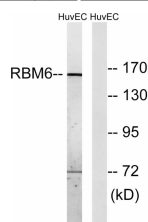
Not yet tested in other applications.

Images



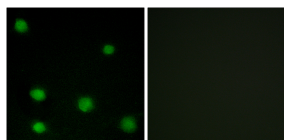
Immunohistochemistry analysis of paraffin-embedded human brain tissue, using RBM6 Antibody.

The picture on the right is blocked with the synthesized peptide.



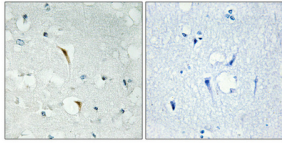
Western blot analysis of lysates from HUVEC cells, using RBM6 Antibody. The lane on the right is

blocked with the synthesized peptide.



Immunofluorescence analysis of COS7 cells, using RBM6 Antibody. The picture on the right is

blocked with the synthesized peptide.



Immunohistochemical analysis of paraffin-embedded Human brain. Antibody was diluted at 1:100(4° overnight). High-pressure and temperature Tris-EDTA,pH8.0 was used for antigen retrieval. Negative contrl (right) obtaned from antibody was pre-absorbed by immunogen peptide.

Storage

-20°C for one year

501 Changsheng S Rd, Nanhu Dist, Jiaxing, Zhejiang, China

Tel: 86 21 31007137 | E-mail: save@bt-laboratory.com | www.bt-laboratory.com