

Desmin Polyclonal Antibody

Description

Product type	Primary Antibody
Code	BT-AP02569
Host	Rabbit
Isotype	IgG
Size	20ul, 50ul, 100ul
Immunogen	The antiserum was produced against synthesized peptide derived from human Desmin. AA range:26-75
Mol wt	53536
Species reactivity	Human, Mouse, Rat
Clonality	Polyclonal
Recommended application	WB, IHC-p, ELISA
Concentration	1 mg/ml
Full name	Desmin Antibody
Synonyms	DES; Desmin

This product is for research use only, not for use in human, therapeutic or diagnostic procedure.

Background

DES encodes a muscle-specific class III intermediate filament. Homopolymers of desmin form a stable intracytoplasmic filamentous network connecting myofibrils to each other and to the plasma membrane. Mutations in DES are associated with desmin-related myopathy, a familial cardiac and skeletal myopathy (CSM), and with distal myopathies.

Recommended Dilution

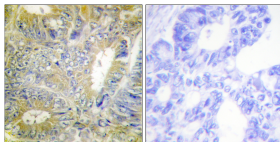
WB: 1: 500 - 1: 2000

IHC: 1: 100 - 1: 300

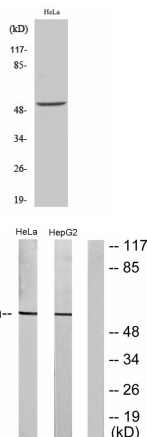
ELISA: 1: 20000

Not yet tested in other applications.

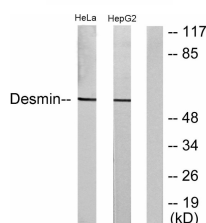
Images



Immunohistochemistry analysis of paraffin-embedded human colon carcinoma tissue, using Desmin Antibody. The picture on the right is blocked with the synthesized peptide.



Western Blot analysis of various cells using Desmin Polyclonal Antibody



Western blot analysis of lysates from HeLa and HepG2 cells, using Desmin Antibody. The lane on the right is blocked with the synthesized peptide.

Storage

-20°C for one year

501 Changsheng S Rd, Nanhu Dist, Jiaxing, Zhejiang, China

Tel: 86 21 31007137 | E-mail: save@bt-laboratory.com | www.bt-laboratory.com