

Desmin Polyclonal Antibody

Description

Product type	Primary Antibody
Code	BT-AP02570
Host	Rabbit
Isotype	IgG
Size	20ul, 50ul, 100ul
Immunogen	The antiserum was produced against synthesized peptide derived from human Desmin. AA range:421-470
Mol wt	53536
Species reactivity	Human, Mouse, Rat
Clonality	Polyclonal
Recommended application	WB, IHC-p, IF, ELISA
Concentration	1 mg/ml
Full name	Desmin Antibody
Synonyms	DES; Desmin

This product is for research use only, not for use in human, therapeutic or diagnostic procedure.

Background

DES encodes a muscle-specific class III intermediate filament. Homopolymers of desmin form a stable intracytoplasmic filamentous network connecting myofibrils to each other and to the plasma membrane. Mutations in DES are associated with desmin-related myopathy, a familial cardiac and skeletal myopathy (CSM), and with distal myopathies.

Recommended Dilution

WB: 1: 500 - 1: 2000

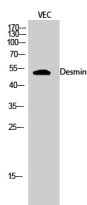
IHC: 1: 100 - 1: 300

IF: 1: 200 - 1: 1000

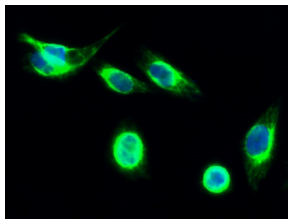
ELISA: 1: 10000

Not yet tested in other applications.

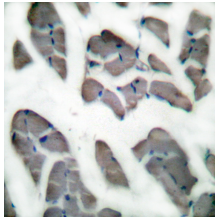
Images



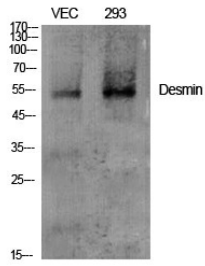
Western Blot analysis of VEC cells using Desmin Polyclonal Antibody diluted at 1:2000



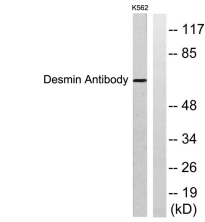
Immunofluorescence analysis of HeLa cell. 1, Desmin Polyclonal Antibody (green) was diluted at 1:200 (4° overnight). 2, Goat Anti Rabbit Alexa Fluor 488 was diluted at 1:1000 (room temperature, 50min). 3 DAPI (blue) 10min.



Immunohistochemistry analysis of paraffin-embedded human skeletal muscle tissue, using Desmin Antibody. The picture on the right is blocked with the synthesized peptide.



Western Blot analysis of various cells using Desmin Polyclonal Antibody diluted at 1:2000



Western blot analysis of lysates from K562 cells, using Desmin Antibody. The lane on the right is blocked with the synthesized peptide.

Storage

-20°C for one year

501 Changsheng S Rd, Nanhu Dist, Jiaxing, Zhejiang, China

Tel: 86 21 31007137 | E-mail: save@bt-laboratory.com | www.bt-laboratory.com