

## DGAT2L3 Polyclonal Antibody

### Description

<b>Product type</b>	Primary Antibody
<b>Code</b>	BT-AP02577
<b>Host</b>	Rabbit
<b>Isotype</b>	IgG
<b>Size</b>	20ul, 50ul, 100ul
<b>Immunogen</b>	The antiserum was produced against synthesized peptide derived from human AWAT1. AA range:261-310
<b>Mol wt</b>	37759
<b>Species reactivity</b>	Human
<b>Clonality</b>	Polyclonal
<b>Recommended application</b>	WB, ELISA
<b>Concentration</b>	1 mg/ml
<b>Full name</b>	DGAT2L3 Antibody
<b>Synonyms</b>	AWAT1; DGA2; DGAT2L3; Acyl-CoA wax alcohol acyltransferase 1; Diacylglycerol O-acyltransferase 2-like protein 3; Diacylglycerol acyltransferase 2; Long-chain-alcohol O-fatty-acyltransferase 1

**This product is for research use only, not for use in human, therapeutic or diagnostic procedure.**

### Background

Acyl-CoA wax alcohol acyltransferase 1 encoded by AWAT1 belongs to the diacylglycerol acyltransferase family. It esterifies long chain (wax) alcohols with acyl-CoA-derived fatty acids to produce wax esters. Wax esters are enriched in sebum, suggesting that this enzyme plays a central role in lipid metabolism in skin. Consistent with this observation, this protein is predominantly expressed in the sebaceous gland of the skin.

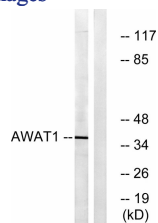
### Recommended Dilution

WB: 1: 500 - 1: 2000

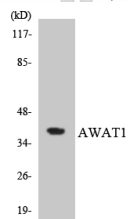
ELISA: 1: 5000

Not yet tested in other applications.

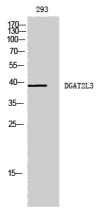
### Images



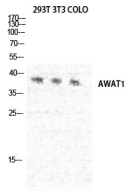
Western blot analysis of lysates from 293 cells, using AWAT1 Antibody. The lane on the right is blocked with the synthesized peptide.



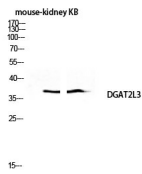
Western blot analysis of the lysates from HT-29 cells using AWAT1 antibody.



Western Blot analysis of 293 cells using DGAT2L3 Polyclonal Antibody diluted at 1:1000



Western Blot analysis of 293T NIH-3T3 COLO cells using DGAT2L3 Polyclonal Antibody diluted at 1:1000



Western blot analysis of mouse-kidney KB lysis using DGAT2L3 antibody. Antibody was diluted at 1:1000

### Storage

-20°C for one year

501 Changsheng S Rd, Nanhu Dist, Jiaxing, Zhejiang, China

Tel: 86 21 31007137 | E-mail: [save@bt-laboratory.com](mailto:save@bt-laboratory.com) | [www.bt-laboratory.com](http://www.bt-laboratory.com)