

DGK-Delta Polyclonal Antibody

Description

Product type	Primary Antibody
Code	BT-AP02581
Host	Rabbit
Isotype	IgG
Size	20ul, 50ul, 100ul
Immunogen	The antiserum was produced against synthesized peptide derived from human DGKD. AA range:41-90
Mol wt	134525
Species reactivity	Human
Clonality	Polyclonal
Recommended application	WB, IHC-p, IF, ELISA
Concentration	1 mg/ml
Full name	DGK-delta Antibody
Synonyms	DGKD; KIAA0145; Diacylglycerol kinase delta; DAG kinase delta; 130 kDa diacylglycerol kinase; Diglyceride kinase delta; DGK-delta

This product is for research use only, not for use in human, therapeutic or diagnostic procedure.

Background

DGKD encodes a cytoplasmic enzyme that phosphorylates diacylglycerol to produce phosphatidic acid. Diacylglycerol and phosphatidic acid are two lipids that act as second messengers in signaling cascades. Their cellular concentrations are regulated by the encoded protein, and so it is thought to play an important role in cellular signal transduction. Alternative splicing results in two transcript variants encoding different isoforms.

Recommended Dilution

WB: 1: 500 - 1: 2000

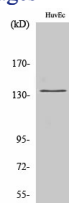
IHC: 1: 100 - 1: 300

IF: 1: 200 - 1: 1000

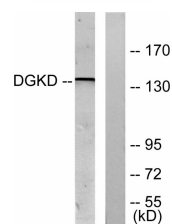
ELISA: 1: 20000

Not yet tested in other applications.

Images



Western Blot analysis of various cells using DGK- δ Polyclonal Antibody



Western blot analysis of lysates from HUVEC cells, using DGKD Antibody. The lane on the right is blocked with the synthesized peptide.

Storage

-20°C for one year

501 Changsheng S Rd, Nanhu Dist, Jiaxing, Zhejiang, China

Tel: 86 21 31007137 | E-mail: save@bt-laboratory.com | www.bt-laboratory.com