

DGK-Epsilon Polyclonal Antibody

Description

Product type	Primary Antibody
Code	BT-AP02582
Host	Rabbit
Isotype	IgG
Size	20ul, 50ul, 100ul
Immunogen	The antiserum was produced against synthesized peptide derived from human DGKE. AA range:161-210
Mol wt	63927
Species reactivity	Human, Mouse, Rat
Clonality	Polyclonal
Recommended application	WB, IHC-p, ELISA
Concentration	1 mg/ml
Full name	DGK-epsilon Antibody
Synonyms	DGKE; DAGK5; Diacylglycerol kinase epsilon; DAG kinase epsilon; Diglyceride kinase epsilon; DGK-epsilon

This product is for research use only, not for use in human, therapeutic or diagnostic procedure.

Background

Diacylglycerol kinases are thought to be involved mainly in the regeneration of phosphatidylinositol (PI) from diacylglycerol in the PI-cycle during cell signal transduction. When expressed in mammalian cells, DGK-epsilon shows specificity for arachidonyl-containing diacylglycerol. DGK-epsilon is expressed predominantly in testis.

Recommended Dilution

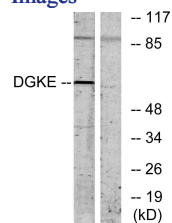
WB: 1: 500 - 1: 2000

IHC: 1: 100 - 1: 300

ELISA: 1: 5000

Not yet tested in other applications.

Images



Western blot analysis of lysates from K562 cells, using DGKE Antibody. The lane on the right is blocked with the synthesized peptide.

Storage

-20°C for one year