

DGK-Eta Polyclonal Antibody

Description

Product type	Primary Antibody
Code	BT-AP02584
Host	Rabbit
Isotype	IgG
Size	20ul, 50ul, 100ul
Immunogen	The antiserum was produced against synthesized peptide derived from human DGKH. AA range:771-820
Mol wt	134866
Species reactivity	Human, Mouse
Clonality	Polyclonal
Recommended application	IHC-p, IF, ELISA
Concentration	1 mg/ml
Full name	DGK-eta Antibody
Synonyms	DGKH; Diacylglycerol kinase eta; DAG kinase eta; Diglyceride kinase eta; DGK-eta

This product is for research use only, not for use in human, therapeutic or diagnostic procedure.

Background

DGKH encodes a member of the diacylglycerol kinase (DGK) enzyme family. Members of this family are involved in regulating intracellular concentrations of diacylglycerol and phosphatidic acid. Variation in this gene has been associated with bipolar disorder. Alternatively spliced transcript variants have been identified.

Recommended Dilution

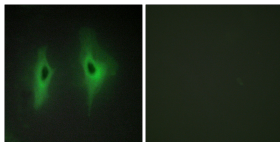
IHC: 1: 100 - 1: 300

IF: 1: 200 - 1: 1000

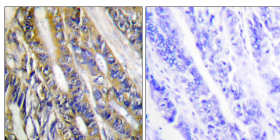
ELISA: 1: 20000

Not yet tested in other applications.

Images



Immunofluorescence analysis of HeLa cells, using DGKH Antibody. The picture on the right is blocked with the synthesized peptide.



Immunohistochemistry analysis of paraffin-embedded human colon carcinoma tissue, using DGKH Antibody. The picture on the right is blocked with the synthesized peptide.

Storage

-20°C for one year