

DHA Kinase Polyclonal Antibody

Description

Product type	Primary Antibody
Code	BT-AP02590
Host	Rabbit
Isotype	IgG
Size	20ul, 50ul, 100ul
Immunogen	The antiserum was produced against synthesized peptide derived from human DAK. AA range:91-140
Mol wt	58977
Species reactivity	Human, Mouse, Rat
Clonality	Polyclonal
Recommended application	WB, IHC-p, ELISA
Concentration	1 mg/ml
Full name	DHA Kinase Antibody
Synonyms	DAK; Bifunctional ATP-dependent dihydroxyacetone kinase/FAD-AMP lyase; cyclizing

This product is for research use only, not for use in human, therapeutic or diagnostic procedure.

Background

TKFC is a member of the family of dihydroxyacetone kinases, which have a protein structure distinct from other kinases. The product of TKFC phosphorylates dihydroxyacetone, and also catalyzes the formation of riboflavin 4',5'-phosphate (aka cyclin FMN) from FAD. Several alternatively spliced transcript variants have been identified, but the full-length nature of only one has been determined.

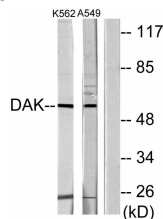
Recommended Dilution

WB: 1: 500 - 1: 2000

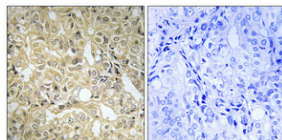
ELISA: 1: 20000

Not yet tested in other applications.

Images



Western blot analysis of lysates from K562 and A549 cells, using DAK Antibody. The lane on the right is blocked with the synthesized peptide.



Immunohistochemical analysis of paraffin-embedded Human prostate cancer. Antibody was diluted at 1:100(4° overnight). High-pressure and temperature Tris-EDTA,pH8.0 was used for antigen retrieval. Negative contrl (right) obtained from antibody was pre-absorbed by immunogen peptide.

Storage

-20°C for one year