

## DHHC-15 Polyclonal Antibody

### Description

<b>Product type</b>	Primary Antibody
<b>Code</b>	BT-AP02596
<b>Host</b>	Rabbit
<b>Isotype</b>	IgG
<b>Size</b>	20ul, 50ul, 100ul
<b>Immunogen</b>	The antiserum was produced against synthesized peptide derived from human ZDHHC15. AA range:288-337
<b>Mol wt</b>	39331
<b>Species reactivity</b>	Human
<b>Clonality</b>	Polyclonal
<b>Recommended application</b>	WB, ELISA
<b>Concentration</b>	1 mg/ml
<b>Full name</b>	DHHC-15 Antibody
<b>Synonyms</b>	ZDHHC15; Palmitoyltransferase ZDHHC15; Zinc finger DHHC domain-containing protein 15; DHHC-15

This product is for research use only, not for use in human, therapeutic or diagnostic procedure.

### Background

Zinc finger DHHC-type containing 15 encoded by ZDHHC15 belongs to the DHHC palmitoyltransferase family. Mutations in this gene are associated with mental retardatio X-linked type 91 (MRX91). Alternatively spliced transcript variants encoding different isoforms have been found for this gene.

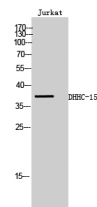
### Recommended Dilution

WB: 1: 500 - 1: 2000

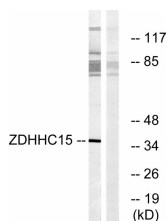
ELISA: 1: 10000

Not yet tested in other applications.

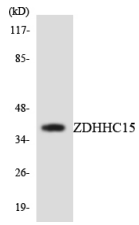
### Images



Western Blot analysis of Jurkat cells using DHHC-15 Polyclonal Antibody



Western blot analysis of lysates from Jurkat cells, using ZDHHC15 Antibody. The lane on the right is blocked with the synthesized peptide.



Western blot analysis of the lysates from 293 cells using ZDHHC15 antibody.

### Storage

-20°C for one year

501 Changsheng S Rd, Nanhu Dist, Jiaxing, Zhejiang, China

Tel: 86 21 31007137 | E-mail: [save@bt-laboratory.com](mailto:save@bt-laboratory.com) | [www.bt-laboratory.com](http://www.bt-laboratory.com)