

## DHHC-7 Polyclonal Antibody

### Description

<b>Product type</b>	Primary Antibody
<b>Code</b>	BT-AP02597
<b>Host</b>	Rabbit
<b>Isotype</b>	IgG
<b>Size</b>	20ul, 50ul, 100ul
<b>Immunogen</b>	The antiserum was produced against synthesized peptide derived from human ZDHHC7. AA range:259-308
<b>Mol wt</b>	35140
<b>Species reactivity</b>	Human
<b>Clonality</b>	Polyclonal
<b>Recommended application</b>	WB, ELISA
<b>Concentration</b>	1 mg/ml
<b>Full name</b>	DHHC-7 Antibody
<b>Synonyms</b>	ZDHHC7; ZNF370; Palmitoyltransferase ZDHHC7; Zinc finger DHHC domain-containing protein 7; DHHC-7; Zinc finger protein 370

This product is for research use only, not for use in human, therapeutic or diagnostic procedure.

### Background

ZDHHC7 is a Palmitoyltransferase with broad specificity which palmitoylates SNAP25 and DLG4/PSD95 and may palmitoylate GABA receptors on their gamma subunit (GABRG1, GABRG2 and GABRG3) and regulate their synaptic clustering and/or cell surface stability.

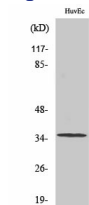
### Recommended Dilution

WB: 1: 500 - 1: 2000

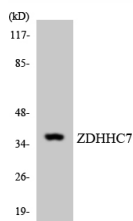
ELISA: 1: 40000

Not yet tested in other applications.

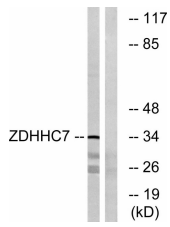
### Images



Western Blot analysis of various cells using DHHC-7 Polyclonal Antibody



Western blot analysis of the lysates from HUVEC cells using ZDHHC7 antibody.



Western blot analysis of lysates from HUVEC cells, using ZDHHC7 Antibody. The lane on the right is blocked with the synthesized peptide.

### Storage

-20°C for one year

501 Changsheng S Rd, Nanhu Dist, Jiaxing, Zhejiang, China

Tel: 86 21 31007137 | E-mail: [save@bt-laboratory.com](mailto:save@bt-laboratory.com) | [www.bt-laboratory.com](http://www.bt-laboratory.com)