

## DHRS4 Polyclonal Antibody

### Description

<b>Product type</b>	Primary Antibody
<b>Code</b>	BT-AP02604
<b>Host</b>	Rabbit
<b>Isotype</b>	IgG
<b>Size</b>	20ul, 50ul, 100ul
<b>Immunogen</b>	The antiserum was produced against synthesized peptide derived from human DHRS4. AA range:191-240
<b>Mol wt</b>	27572
<b>Species reactivity</b>	Human
<b>Clonality</b>	Polyclonal
<b>Recommended application</b>	WB, IHC-p, ELISA
<b>Concentration</b>	1 mg/ml
<b>Full name</b>	DHRS4 Antibody
<b>Synonyms</b>	DHRS4; Dehydrogenase/reductase SDR family member 4; NADPH-dependent carbonyl reductase/NADP-retinol dehydrogenase; CR; PHCR; NADPH-dependent retinol dehydrogenase/reductase; NRDR; humNRDR; Peroxisomal

This product is for research use only, not for use in human, therapeutic or diagnostic procedure.

### Background

Reduces all-trans-retinal and 9-cis retinal. Can also catalyze the oxidation of all-trans-retinol with NADP as co-factor, but with much lower efficiency. Reduces alkyl phenyl ketones and alpha-dicarbonyl compounds with aromatic rings, such as pyrimidine-4-aldehyde, 3-benzoylpyridine, 4-benzoylpyridine, menadione and 4-hexanoylpyridine. Has no activity towards aliphatic aldehydes and ketones.

### Recommended Dilution

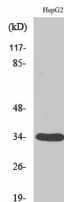
WB: 1: 500 - 1: 2000

IHC: 1: 100 - 1: 300

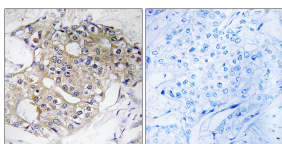
ELISA: 1: 40000

Not yet tested in other applications.

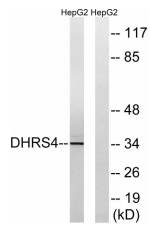
### Images



Western Blot analysis of various cells using DHRS4 Polyclonal Antibody diluted at 1:2000



Immunohistochemistry analysis of paraffin-embedded human breast carcinoma tissue, using DHRS4 Antibody. The picture on the right is blocked with the synthesized peptide.



Western blot analysis of lysates from HepG2 cells, using DHRS4 Antibody. The lane on the right is blocked with the synthesized peptide.

### Storage

-20°C for one year

501 Changsheng S Rd, Nanhu Dist, Jiaxing, Zhejiang, China

Tel: 86 21 31007137 | E-mail: [save@bt-laboratory.com](mailto:save@bt-laboratory.com) | [www.bt-laboratory.com](http://www.bt-laboratory.com)