

## DHS Polyclonal Antibody

### Description

<b>Product type</b>	Primary Antibody
<b>Code</b>	BT-AP02607
<b>Host</b>	Rabbit
<b>Isotype</b>	IgG
<b>Size</b>	20ul, 50ul, 100ul
<b>Immunogen</b>	The antiserum was produced against synthesized peptide derived from human DHPS. AA range:51-100
<b>Mol wt</b>	40971
<b>Species reactivity</b>	Human
<b>Clonality</b>	Polyclonal
<b>Recommended application</b>	WB, ELISA
<b>Concentration</b>	1 mg/ml
<b>Full name</b>	DHS Antibody
<b>Synonyms</b>	DHPS; DS; Deoxyhypusine synthase; DHS

**This product is for research use only, not for use in human, therapeutic or diagnostic procedure.**

### Background

DHPS encodes a protein that is required for the formation of hypusine, a unique amino acid formed by the posttranslational modification of only one protein, eukaryotic translation initiation factor 5A. The encoded protein (deoxyhypusine synthase) catalyzes the first step in hypusine formation by transferring the butylamine moiety of spermidine to a specific lysine residue of the eukaryotic translation initiation factor 5A precursor, forming an intermediate deoxyhypusine residue. Alternatively spliced transcript variants encoding multiple isoforms have been observed for DHPS.

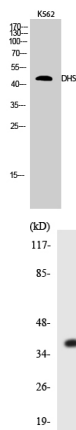
### Recommended Dilution

WB: 1: 500 - 1: 2000

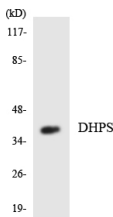
ELISA: 1: 20000

Not yet tested in other applications.

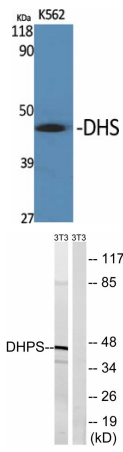
### Images



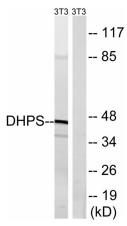
Western Blot analysis of K562 cells using DHS Polyclonal Antibody



Western blot analysis of the lysates from HUVEC cells using DHPS antibody.



Western Blot analysis of various cells using DHS Polyclonal Antibody



Western blot analysis of lysates from NIH/3T3 cells, using DHPS Antibody. The lane on the right is blocked with the synthesized peptide.

**Storage**

-20°C for one year

501 Changsheng S Rd, Nanhu Dist, Jiaxing, Zhejiang, China

Tel: 86 21 31007137 | E-mail: [save@bt-laboratory.com](mailto:save@bt-laboratory.com) | [www.bt-laboratory.com](http://www.bt-laboratory.com)