

Dkk-1 Polyclonal Antibody

Description

Product type	Primary Antibody
Code	BT-AP02622
Host	Rabbit
Isotype	IgG
Size	20ul, 50ul, 100ul
Immunogen	The antiserum was produced against synthesized peptide derived from the C-terminal region of human DKK1. AA range:181-230
Mol wt	28672
Species reactivity	Human, Mouse, Rat
Clonality	Polyclonal
Recommended application	WB, IHC-p, ELISA
Concentration	1 mg/ml
Full name	Dkk-1 Antibody
Synonyms	DKK1; Dickkopf-related protein 1; Dickkopf-1; Dkk-1; hDkk-1; SK

This product is for research use only, not for use in human, therapeutic or diagnostic procedure.

Background

DKK1 encodes dickkopf WNT signaling pathway inhibitor 1 that is a member of the dickkopf family. It is a secreted protein with two cysteine rich regions and is involved in embryonic development through its inhibition of the WNT signaling pathway. Elevated levels of DKK1 in bone marrow plasma and peripheral blood is associated with the presence of osteolytic bone lesions in patients with multiple myeloma.

Recommended Dilution

WB: 1: 500 - 1: 2000

IHC-p: 1: 100 - 1: 300

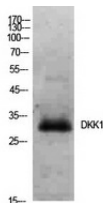
ELISA: 1: 10000

Not yet tested in other applications.

Images



Immunohistochemical analysis of paraffin-embedded human-brain, antibody was diluted at 1:100



Western Blot analysis of Hela cells using Dkk-1 Polyclonal Antibody. Secondary antibody was diluted at 1:20000

Storage

-20°C for one year

501 Changsheng S Rd, Nanhu Dist, Jiaxing, Zhejiang, China

Tel: 86 21 31007137 | E-mail: save@bt-laboratory.com | www.bt-laboratory.com