

## Dkk-3 Polyclonal Antibody

### Description

<b>Product type</b>	Primary Antibody
<b>Code</b>	BT-AP02624
<b>Host</b>	Rabbit
<b>Isotype</b>	IgG
<b>Size</b>	20ul, 50ul, 100ul
<b>Immunogen</b>	The antiserum was produced against synthesized peptide derived from human DKK3. AA range:111-160
<b>Mol wt</b>	38291
<b>Species reactivity</b>	Human, Mouse
<b>Clonality</b>	Polyclonal
<b>Recommended application</b>	WB, ELISA
<b>Concentration</b>	1 mg/ml
<b>Full name</b>	Dkk-3 Antibody
<b>Synonyms</b>	DKK3; REIC; Dickkopf-related protein 3; Dickkopf-3; Dkk-3; hDkk-3

This product is for research use only, not for use in human, therapeutic or diagnostic procedure.

### Background

DKK3 encodes dickkopf WNT signaling pathway inhibitor 3 that is a member of the dickkopf family. The secreted protein contains two cysteine rich regions and is involved in embryonic development through its interactions with the Wnt signaling pathway. The expression of DKK3 is decreased in a variety of cancer cell lines and it may function as a tumor suppressor gene. Alternative splicing results in multiple transcript variants encoding the same protein.

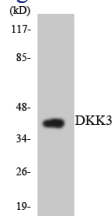
### Recommended Dilution

WB: 1: 500 - 1: 2000

ELISA: 1: 20000

Not yet tested in other applications.

### Images



Western blot analysis of the lysates from HepG2 cells using DKK3 antibody.

### Storage

-20°C for one year