

DLEC1 Polyclonal Antibody

Description

Product type	Primary Antibody
Code	BT-AP02628
Host	Rabbit
Isotype	IgG
Size	20ul, 50ul, 100ul
Immunogen	The antiserum was produced against synthesized peptide derived from human DLEC1. AA range:1-50
Mol wt	195684
Species reactivity	Human
Clonality	Polyclonal
Recommended application	IHC-p, IF, ELISA
Concentration	1 mg/ml
Full name	DLEC1 Antibody
Synonyms	DLEC1; DLC1; Deleted in lung and esophageal cancer protein 1; Deleted in lung cancer protein 1; DLC-1

This product is for research use only, not for use in human, therapeutic or diagnostic procedure.

Background

The cytogenetic location of DLEC1 (deleted in lung and esophageal cancer 1) is 3p21. , and it is located in a region that is commonly deleted in a variety of malignancies. Down-regulation of DLEC1 has been observed in several human cancers including lung, esophageal, renal tumors, and head and neck squamous cell carcinoma. In some cases, reduced expression of DLEC1 in tumor cells is a result of aberrant promoter methylation. Several alternatively spliced transcripts have been observed that contain disrupted coding regions and likely encode nonfunctional proteins.

Recommended Dilution

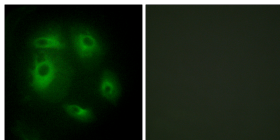
IHC: 1: 100 - 1: 300

IF: 1: 200 - 1: 1000

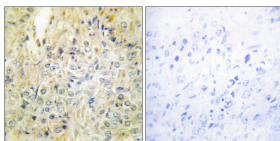
ELISA: 1: 10000

Not yet tested in other applications.

Images



Immunofluorescence analysis of HeLa cells, using DLEC1 Antibody. The picture on the right is blocked with the synthesized peptide.



Immunohistochemistry analysis of paraffin-embedded human prostate carcinoma tissue, using DLEC1 Antibody. The picture on the right is blocked with the synthesized peptide.

Storage

-20°C for one year