

FAN1 Rabbit Polyclonal Antibody

Description

Product type	Primary Antibody
Code	BT-AP02631
Host	Rabbit
Isotype	IgG
Size	20ul, 50ul, 100ul
Immunogen	Synthesized peptide derived from human FAN1
Mol wt	111870
Species reactivity	Human, Mouse
Clonality	Polyclonal
Recommended application	WB
Concentration	1 mg/ml
Full name	FAN1
Synonyms	FAN1

This product is for research use only, not for use in human, therapeutic or diagnostic procedure.

Background

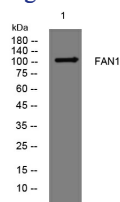
This gene plays a role in DNA interstrand cross-link repair and encodes a protein with 5' flap endonuclease and 5'-3' exonuclease activity. Mutations in this gene cause karyomegalic interstitial nephritis. Alternatively spliced transcript variants encoding distinct isoforms have been described.

Recommended Dilution

WB: 1: 500 - 1: 2000

Not yet tested in other applications.

Images



Western blot analysis of lysates from HeLa cells, primary antibody was diluted at 1:1000, 4°C overnight

Storage

-20°C for 1 year

501 Changsheng S Rd, Nanhu Dist, Jiaxing, Zhejiang, China

Tel: 86 21 31007137 | E-mail: save@bt-laboratory.com | www.bt-laboratory.com