

Dlx-5 Polyclonal Antibody

Description

Product type	Primary Antibody
Code	BT-AP02640
Host	Rabbit
Isotype	IgG
Size	20ul, 50ul, 100ul
Immunogen	The antiserum was produced against synthesized peptide derived from human DLX5. AA range:91-140
Mol wt	31540
Species reactivity	Human, Mouse, Rat
Clonality	Polyclonal
Recommended application	WB, IHC-p, IF, ELISA
Concentration	1 mg/ml
Full name	Dlx-5 Antibody
Synonyms	DLX5; Homeobox protein DLX-5

This product is for research use only, not for use in human, therapeutic or diagnostic procedure.

Background

DLX5 encodes a member of a homeobox transcription factor gene family similar to the Drosophila distal-less gene. The encoded protein (distal-less homeobox 5) may play a role in bone development and fracture healing. Mutation in DLX5, which is located in a tail-to-tail configuration with another member of the family on the long arm of chromosome 7, may be associated with split-hand/split-foot malformation.

Recommended Dilution

WB: 1: 500 - 1: 2000

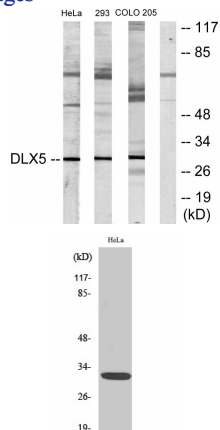
IHC: 1: 100 - 1: 300

IF: 1: 200 - 1: 1000

ELISA: 1: 40000

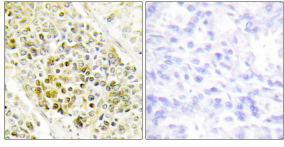
Not yet tested in other applications.

Images



Western blot analysis of lysates from HeLa, 293, and COLO205 cells, using DLX5 Antibody. The lane on the right is blocked with the synthesized peptide.

Western Blot analysis of various cells using Dlx-5 Polyclonal Antibody diluted at 1:500



Immunohistochemistry analysis of paraffin-embedded human lung carcinoma tissue, using DLX5 Antibody. The picture on the right is blocked with the synthesized peptide.

Storage

-20°C for one year

501 Changsheng S Rd, Nanhu Dist, Jiaxing, Zhejiang, China

Tel: 86 21 31007137 | E-mail: save@bt-laboratory.com | www.bt-laboratory.com