

FBW1B Rabbit Polyclonal Antibody

Description

Product type	Primary Antibody
Code	BT-AP02642
Host	Rabbit
Isotype	IgG
Size	20ul, 50ul, 100ul
Immunogen	Synthesized peptide derived from human FBW1B
Mol wt	59620
Species reactivity	Human, Mouse
Clonality	Polyclonal
Recommended application	WB
Concentration	1 mg/ml
Full name	FBW1B
Synonyms	FBW1B

This product is for research use only, not for use in human, therapeutic or diagnostic procedure.

Background

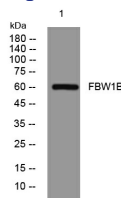
This gene encodes a member of the F-box protein family which is characterized by an approximately 40 amino acid motif| the F-box. The F-box proteins constitute one of the four subunits of ubiquitin protein ligase complex called SCFs (SKP1-cullin-F-box|) which function in phosphorylation-dependent ubiquitination. The F-box proteins are divided into 3 classes: Fbws containing WD-40 domains| Fbls containing leucine-rich repeats| and Fbxs containing either different protein-protein interaction modules or no recognizable motifs. The protein encoded by this gene belongs to the Fbws class and| in addition to an F-box| contains multiple WD40 repeats. This gene contains at least 14 exons| and its alternative splicing generates 3 transcript variants diverging at the presence/absence of two alternate exons.

Recommended Dilution

WB: 1: 500 - 1: 2000

Not yet tested in other applications.

Images



Western blot analysis of lysates from U2OS cells, primary antibody was diluted at 1:1000, 4°C overnight

Storage

-20°C for 1 year