

DNA Ligase I Polyclonal Antibody

Description

Product type	Primary Antibody
Code	BT-AP02651
Host	Rabbit
Isotype	IgG
Size	20ul, 50ul, 100ul
Immunogen	The antiserum was produced against synthesized peptide derived from human DNL1. AA range:111-160
Mol wt	101736
Species reactivity	Human
Clonality	Polyclonal
Recommended application	WB, IHC-p, ELISA
Concentration	1 mg/ml
Full name	DNA Ligase I Antibody
Synonyms	LIG1; DNA ligase 1; DNA ligase I; Polydeoxyribonucleotide synthase [ATP] 1

This product is for research use only, not for use in human, therapeutic or diagnostic procedure.

Background

LIG1 encodes a member of the ATP-dependent DNA ligase protein family. DNA ligase 1 functions in DNA replication, recombination, and the base excision repair process. Mutations in this gene that lead to DNA ligase 1 deficiency result in immunodeficiency and increased sensitivity to DNA-damaging agents. Disruption of LIG1 may also be associated with a variety of cancers. Alternative splicing results in multiple transcript variants.

Recommended Dilution

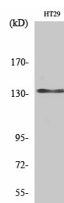
WB: 1: 500 - 1: 2000

IHC: 1: 100 - 1: 300

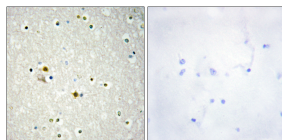
ELISA: 1: 20000

Not yet tested in other applications.

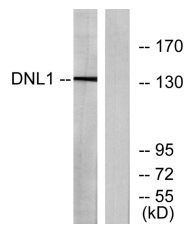
Images



Western Blot analysis of various cells using DNA Ligase I Polyclonal Antibody diluted at 1:2000 cells nucleus.



Immunohistochemistry analysis of paraffin-embedded human brain tissue, using DNL1 Antibody. The picture on the right is blocked with the synthesized peptide.



Western blot analysis of lysates from HT-29 cells, using DNL1 Antibody. The lane on the right is blocked with the synthesized peptide.

Storage

-20°C for one year

501 Changsheng S Rd, Nanhu Dist, Jiaxing, Zhejiang, China

Tel: 86 21 31007137 | E-mail: save@bt-laboratory.com | www.bt-laboratory.com