

DNA Ligase III Polyclonal Antibody

Description

Product type	Primary Antibody
Code	BT-AP02652
Host	Rabbit
Isotype	IgG
Size	20ul, 50ul, 100ul
Immunogen	Synthesized peptide derived from DNA Ligase III . at AA range: 110-190
Mol wt	102691
Species reactivity	Human, Mouse, Rat
Clonality	Polyclonal
Recommended application	WB, ELISA
Concentration	1 mg/ml
Full name	DNA Ligase III Antibody
Synonyms	LIG3; DNA ligase 3; DNA ligase III; Polydeoxyribonucleotide synthase [ATP] 3

This product is for research use only, not for use in human, therapeutic or diagnostic procedure.

Background

LIG3 is a member of the DNA ligase family. Each member of this family encodes a protein that catalyzes the joining of DNA ends but they each have a distinct role in DNA metabolism. DNA ligase 3 encoded by LIG3 is involved in excision repair and is located in both the mitochondria and nucleus, with translation initiation from the upstream start codon allowing for transport to the mitochondria and translation initiation from a downstream start codon allowing for transport to the nucleus. Additionally, alternate transcriptional splice variants, encoding different isoforms, have been characterized.

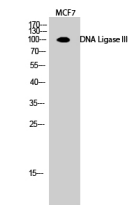
Recommended Dilution

WB: 1: 500 - 1: 2000

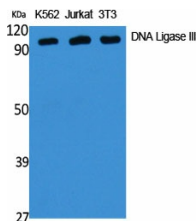
ELISA: 1: 10000

Not yet tested in other applications.

Images



Western Blot analysis of MCF7 cells using DNA Ligase III Polyclonal Antibody diluted at 1:1000 cells nucleus.



Western Blot analysis of various cells using DNA Ligase III Polyclonal Antibody diluted at 1:1000 cells nucleus.

Storage

-20°C for one year

501 Changsheng S Rd, Nanhu Dist, Jiaxing, Zhejiang, China

Tel: 86 21 31007137 | E-mail: save@bt-laboratory.com | www.bt-laboratory.com