

DNA pol Gamma2 Polyclonal Antibody

Description

| | |
|--------------------------------|---|
| Product type | Primary Antibody |
| Code | BT-AP02657 |
| Host | Rabbit |
| Isotype | IgG |
| Size | 20ul, 50ul, 100ul |
| Immunogen | The antiserum was produced against synthesized peptide derived from human POLG2. AA range:291-340 |
| Mol wt | 54911 |
| Species reactivity | Human |
| Clonality | Polyclonal |
| Recommended application | IHC-p, ELISA |
| Concentration | 1 mg/ml |
| Full name | DNA pol gamma2 Antibody |
| Synonyms | POLG2; MTPOLB; DNA polymerase subunit gamma-2; mitochondrial; DNA polymerase gamma accessory 55 kDa subunit; p55; Mitochondrial DNA polymerase accessory subunit; MtPolB; PolG-beta |

This product is for research use only, not for use in human, therapeutic or diagnostic procedure.

Background

POLG2 encodes the processivity subunit of the mitochondrial DNA polymerase gamma. The DNA polymerase gamma 2, accessory subunit forms a heterotrimer containing one catalytic subunit and two processivity subunits. This protein enhances DNA binding and promotes processive DNA synthesis. Mutations in this gene result in autosomal dominant progressive external ophthalmoplegia with mitochondrial DNA deletions.

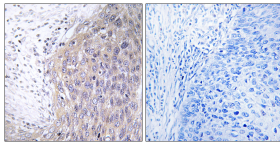
Recommended Dilution

IHC: 1: 100 - 1: 300

ELISA: 1: 20000

Not yet tested in other applications.

Images



Immunohistochemistry analysis of paraffin-embedded human cervix carcinoma tissue, using POLG2 Antibody. The picture on the right is blocked with the synthesized peptide.

Storage

-20°C for one year