

DNA pol Delta cat Polyclonal Antibody

Description

Product type	Primary Antibody
Code	BT-AP02658
Host	Rabbit
Isotype	IgG
Size	20ul, 50ul, 100ul
Immunogen	The antiserum was produced against synthesized peptide derived from human POLD1. AA range:1051-1100
Mol wt	123631
Species reactivity	Human, Mouse, Rat
Clonality	Polyclonal
Recommended application	WB, ELISA
Concentration	1 mg/ml
Full name	DNA pol delta cat Antibody
Synonyms	POLD1; POLD; DNA polymerase delta catalytic subunit; DNA polymerase subunit delta p125

This product is for research use only, not for use in human, therapeutic or diagnostic procedure.

Background

POLD1 (DNA polymerase delta 1, catalytic subunit) encodes the 125-kDa catalytic subunit of DNA polymerase delta. DNA polymerase delta possesses both polymerase and 3' to 5' exonuclease activity and plays a critical role in DNA replication and repair. Alternatively spliced transcript variants have been observed for this gene, and a pseudogene of this gene is located on the long arm of chromosome 6.

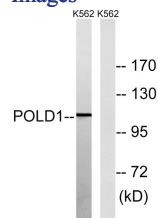
Recommended Dilution

WB: 1: 500 - 1: 2000

ELISA: 1: 40000

Not yet tested in other applications.

Images



Western blot analysis of lysates from K562 cells, using POLD1 Antibody. The lane on the right is blocked with the synthesized peptide.

Storage

-20°C for one year