

DNA pol Epsilon A Polyclonal Antibody

Description

Product type	Primary Antibody
Code	BT-AP02661
Host	Rabbit
Isotype	IgG
Size	20ul, 50ul, 100ul
Immunogen	The antiserum was produced against synthesized peptide derived from human POLE1. AA range:1261-1310
Mol wt	261518
Species reactivity	Human, Rat
Clonality	Polyclonal
Recommended application	IHC-p, ELISA
Concentration	1 mg/ml
Full name	DNA pol epsilon A Antibody
Synonyms	POLE; POLE1; DNA polymerase epsilon catalytic subunit A; DNA polymerase II subunit A

This product is for research use only, not for use in human, therapeutic or diagnostic procedure.

Background

POLE (DNA polymerase epsilon, catalytic subunit) encodes the catalytic subunit of DNA polymerase epsilon. The enzyme is involved in DNA repair and chromosomal DNA replication. Mutations in POLE have been associated with colorectal cancer 12 and facial dysmorphism, immunodeficiency, livedo, and short stature.

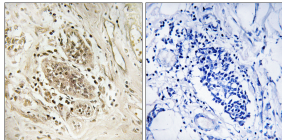
Recommended Dilution

IHC: 1: 100 - 1: 300

ELISA: 1: 40000

Not yet tested in other applications.

Images



Immunohistochemistry analysis of paraffin-embedded human breast carcinoma tissue, using POLE1 Antibody. The picture on the right is blocked with the synthesized peptide.

Storage

-20°C for one year