

## DNA pol Epsilon B Polyclonal Antibody

### Description

Product type	Primary Antibody
Code	BT-AP02662
Host	Rabbit
Isotype	IgG
Size	20ul, 50ul, 100ul
Immunogen	Synthesized peptide derived from the Internal region of human DNA pol ε B.
Mol wt	59537
Species reactivity	Human
Clonality	Polyclonal
Recommended application	WB, ELISA
Concentration	1 mg/ml
Full name	DNA pol epsilon B Antibody
Synonyms	POLE2; DPE2; DNA polymerase epsilon subunit 2; DNA polymerase II subunit 2; DNA polymerase epsilon subunit B

This product is for research use only, not for use in human, therapeutic or diagnostic procedure.

### Background

POLE2 (Polymerase (DNA) Epsilon 2, Accessory Subunit) is a Protein Coding gene. Among its related pathways are Metabolism and Cell Cycle, Mitotic. Gene Ontology (GO) annotations related to this gene include DNA-directed DNA polymerase activity. Participates in DNA repair and in chromosomal DNA replication.

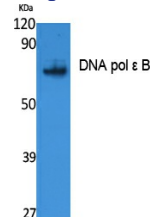
### Recommended Dilution

WB: 1: 500 - 1: 2000

ELISA: 1: 40000

Not yet tested in other applications.

### Images



Western Blot analysis of extracts from Jurkat cells, using DNA pol ε B Polyclonal Antibody. Secondary antibody was diluted at 1:20000 cells nucleus.

### Storage

-20°C for one year