

DNA Pol mu Polyclonal Antibody

Description

Product type	Primary Antibody
Code	BT-AP02667
Host	Rabbit
Isotype	IgG
Size	20ul, 50ul, 100ul
Immunogen	Synthesized peptide derived from DNA Pol μ . at AA range: 210-290
Mol wt	54816
Species reactivity	Human
Clonality	Polyclonal
Recommended application	WB, ELISA
Concentration	1 mg/ml
Full name	DNA Pol mu Antibody
Synonyms	POLM; polmu; DNA-directed DNA/RNA polymerase mu; Pol Mu; Terminal transferase

This product is for research use only, not for use in human, therapeutic or diagnostic procedure.

Background

POLM (Polymerase (DNA) Mu) is a Protein Coding gene. Among its related pathways are Platinum Pathway, Pharmacokinetics/Pharmacodynamics and DNA Double-Strand Break Repair. Gene Ontology (GO) annotations related to this gene include DNA-directed DNA polymerase activity and DNA polymerase activity. An important paralog of this gene is POLB. Gap-filling polymerase involved in repair of DNA double-strand breaks by non-homologous end joining (NHEJ). Participates in immunoglobulin (Ig) light chain gene rearrangement in V(D)J recombination.

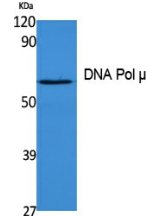
Recommended Dilution

WB: 1: 500 - 1: 2000

ELISA: 1: 40000

Not yet tested in other applications.

Images



Western Blot analysis of extracts from K562 cells, using DNA Pol μ Polyclonal Antibody. Secondary antibody was diluted at 1:20000 cells nucleus.

Storage

-20°C for one year