

## DnaJB4 Polyclonal Antibody

### Description

<b>Product type</b>	Primary Antibody
<b>Code</b>	BT-AP02669
<b>Host</b>	Rabbit
<b>Isotype</b>	IgG
<b>Size</b>	20ul, 50ul, 100ul
<b>Immunogen</b>	The antiserum was produced against synthesized peptide derived from human DNAJB4. AA range:91-140
<b>Mol wt</b>	37807
<b>Species reactivity</b>	Human, Mouse, Rat
<b>Clonality</b>	Polyclonal
<b>Recommended application</b>	WB, IHC-p, ELISA
<b>Concentration</b>	1 mg/ml
<b>Full name</b>	DnaJB4 Antibody
<b>Synonyms</b>	DNAJB4; DNAJW; HLJ1; DnaJ homolog subfamily B member 4; Heat shock 40 kDa protein 1 homolog; HSP40 homolog; Heat shock protein 40 homolog; Human liver DnaJ-like protein

**This product is for research use only, not for use in human, therapeutic or diagnostic procedure.**

### Background

DnaJ heat shock protein family (Hsp40) member B4 encoded by DNAJB4 is a molecular chaperone, tumor suppressor, and member of the heat shock protein-40 family. The encoded protein binds the cell adhesion protein E-cadherin and targets it to the plasma membrane. This protein also binds incorrectly folded E-cadherin and targets it for endoplasmic reticulum-associated degradation. This gene is a strong tumor suppressor for colorectal carcinoma, and downregulation of it may serve as a good biomarker for predicting patient outcomes. Several transcript variants encoding different isoforms have been found for DNAJB4.

### Recommended Dilution

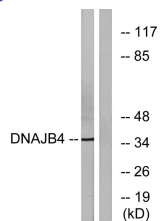
WB: 1: 500 - 1: 2000

IHC: 1: 100 - 1: 300

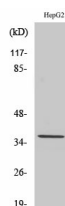
ELISA: 1: 40000

Not yet tested in other applications.

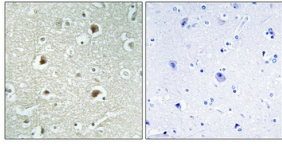
### Images



Western blot analysis of lysates from HepG2 cells, using DNAJB4 Antibody. The lane on the right is blocked with the synthesized peptide.



Western Blot analysis of various cells using DnaJB4 Polyclonal Antibody



Immunohistochemical analysis of paraffin-embedded Human brain. Antibody was diluted at 1:100(4° overnight). High-pressure and temperature Tris-EDTA,pH8.0 was used for antigen retrieval. Negative contrl (right) obtaned from antibody was pre-absorbed by immunogen peptide.

### Storage

-20°C for one year

501 Changsheng S Rd, Nanhu Dist, Jiaxing, Zhejiang, China

Tel: 86 21 31007137 | E-mail: [save@bt-laboratory.com](mailto:save@bt-laboratory.com) | [www.bt-laboratory.com](http://www.bt-laboratory.com)