

DNAM-1 Polyclonal Antibody

Description

Product type	Primary Antibody
Code	BT-AP02672
Host	Rabbit
Isotype	IgG
Size	20ul, 50ul, 100ul
Immunogen	The antiserum was produced against synthesized peptide derived from human CD226/DNAM-1. AA range:287-336
Mol wt	38584
Species reactivity	Human, Mouse, Monkey
Clonality	Polyclonal
Recommended application	WB, IHC-p, IF, ELISA
Concentration	1 mg/ml
Full name	DNAM-1 Antibody
Synonyms	CD226; DNAM1; CD226 antigen; DNAX accessory molecule 1; DNAM-1; CD antigen CD226

This product is for research use only, not for use in human, therapeutic or diagnostic procedure.

Background

CD226 encodes a glycoprotein expressed on the surface of NK cells, platelets, monocytes and a subset of T cells. It is a member of the Ig-superfamily containing 2 Ig-like domains of the V-set. The CD226 molecule mediates cellular adhesion of platelets and megakaryocytic cells to vascular endothelial cells. The protein also plays a role in megakaryocytic cell maturation. Alternative splicing results in multiple transcript variants.

Recommended Dilution

WB: 1: 500 - 1: 2000

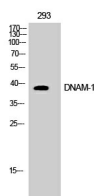
IHC: 1: 100 - 1: 300

IF: 1: 200 - 1: 1000

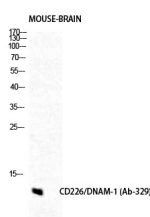
ELISA: 1: 20000

Not yet tested in other applications.

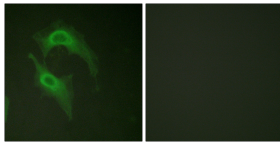
Images



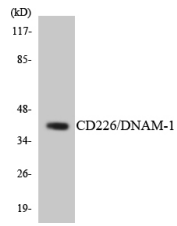
Western Blot analysis of COS7 cells using DNAM-1 Polyclonal Antibody diluted at 1:500



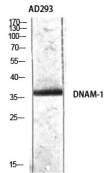
Western Blot analysis of mouse-brain cells using DNAM-1 Polyclonal Antibody diluted at 1:500



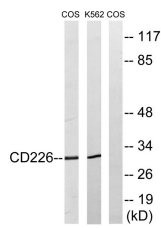
Immunofluorescence analysis of HeLa cells, using CD226/DNAM-1 Antibody. The picture on the right is blocked with the synthesized peptide.



Western blot analysis of the lysates from HUVEC cells using CD226/DNAM-1 antibody.



Western Blot analysis of AD293 using DNAM-1 Polyclonal Antibody diluted at 1:500



Western blot analysis of lysates from COS7 and K562 cells, treated with PMA 125ng/ml 30', using CD226/DNAM-1 Antibody. The lane on the right is blocked with the synthesized peptide.

Storage

-20°C for one year

501 Changsheng S Rd, Nanhu Dist, Jiaxing, Zhejiang, China

Tel: 86 21 31007137 | E-mail: save@bt-laboratory.com | www.bt-laboratory.com