

## DNA-PKCS Polyclonal Antibody

### Description

<b>Product type</b>	Primary Antibody
<b>Code</b>	BT-AP02675
<b>Host</b>	Rabbit
<b>Isotype</b>	IgG
<b>Size</b>	20ul, 50ul, 100ul
<b>Immunogen</b>	The antiserum was produced against synthesized peptide derived from human DNA-PK. AA range:2604-2653
<b>Mol wt</b>	469089
<b>Species reactivity</b>	Human, Mouse
<b>Clonality</b>	Polyclonal
<b>Recommended application</b>	IF, ELISA
<b>Concentration</b>	1 mg/ml
<b>Full name</b>	DNA-PKCS Antibody
<b>Synonyms</b>	PRKDC; HYRC; HYRC1; DNA-dependent protein kinase catalytic subunit; DNA-PK catalytic subunit; DNA-PKcs; DNPk1; p460

This product is for research use only, not for use in human, therapeutic or diagnostic procedure.

### Background

PRKDC (protein kinase, DNA-activated, catalytic polypeptide) encodes the catalytic subunit of the DNA-dependent protein kinase (DNA-PK). It functions with the Ku70/Ku80 heterodimer protein in DNA double strand break repair and recombination. The protein encoded is a member of the PI3/PI4-kinase family.

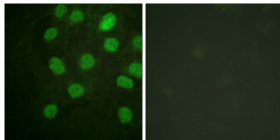
### Recommended Dilution

IF: 1: 200 - 1: 1000

ELISA: 1: 20000

Not yet tested in other applications.

### Images



Immunofluorescence analysis of HUVEC cells, using DNA-PK Antibody. The picture on the right is blocked with the synthesized peptide.

### Storage

-20°C for one year