

FHR5 Rabbit Polyclonal Antibody

Description

Product type	Primary Antibody
Code	BT-AP02686
Host	Rabbit
Isotype	IgG
Size	20ul, 50ul, 100ul
Immunogen	Synthesized peptide derived from human FHR5
Mol wt	N/A
Species reactivity	Human, Rat, Mouse
Clonality	Polyclonal
Recommended application	WB
Concentration	1 mg/ml
Full name	FHR5
Synonyms	FHR5; Complement factor H-related protein 5; FHR-5)

This product is for research use only, not for use in human, therapeutic or diagnostic procedure.

Background

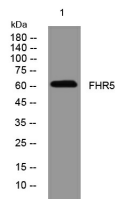
This gene is a member of a small complement factor H (CFH) gene cluster on chromosome 1. Each member of this gene family contains multiple short consensus repeats (SCRs) typical of regulators of complement activation. The protein encoded by this gene has nine SCRs with the first two repeats having heparin binding properties| a region within repeats 5-7 having heparin binding and C reactive protein binding properties| and the C-terminal repeats being similar to a complement component 3 b (C3b) binding domain. This protein co-localizes with C3| binds C3b in a dose-dependent manner| and is recruited to tissues damaged by C-reactive protein. Allelic variations in this gene have been associated| but not causally linked| with two different forms of kidney disease: membranoproliferative glomerulonephritis type II (MPGNII) and hemolytic uraemic syndrome (HUS).

Recommended Dilution

WB: 1: 500 - 1: 2000

Not yet tested in other applications.

Images



Western blot analysis of lysates from SW480 cells, primary antibody was diluted at 1:1000, 4°C overnight

Storage

-20°C for 1 year