

DOC-1R Polyclonal Antibody

Description

Product type	Primary Antibody
Code	BT-AP02691
Host	Rabbit
Isotype	IgG
Size	20ul, 50ul, 100ul
Immunogen	The antiserum was produced against synthesized peptide derived from human CDKA2. AA range:51-100
Mol wt	13101
Species reactivity	Human, Mouse
Clonality	Polyclonal
Recommended application	IHC-p, ELISA
Concentration	1 mg/ml
Full name	DOC-1R Antibody
Synonyms	CDK2AP2; DOC1R; Cyclin-dependent kinase 2-associated protein 2; CDK2-associated protein 2; DOC-1-related protein; DOC-1R

This product is for research use only, not for use in human, therapeutic or diagnostic procedure.

Background

CDK2AP2 encodes cyclin dependent kinase 2 associated protein 2 that interacts with cyclin-dependent kinase 2 associated protein 1. Pseudogenes associated with this gene are located on chromosomes 7 and 9. Alternatively spliced transcript variants have been observed for this gene.

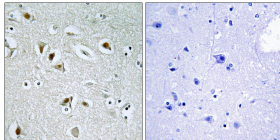
Recommended Dilution

IHC: 1: 100 - 1: 300

ELISA: 1: 5000

Not yet tested in other applications.

Images



Immunohistochemistry analysis of paraffin-embedded human brain tissue, using CDKA2 Antibody. The picture on the right is blocked with the synthesized peptide.

Storage

-20°C for one year

501 Changsheng S Rd, Nanhu Dist, Jiaxing, Zhejiang, China

Tel: 86 21 31007137 | E-mail: save@bt-laboratory.com | www.bt-laboratory.com