

DOCK 180 Polyclonal Antibody

Description

Product type	Primary Antibody
Code	BT-AP02692
Host	Rabbit
Isotype	IgG
Size	20ul, 50ul, 100ul
Immunogen	The antiserum was produced against synthesized peptide derived from human DOCK1. AA range:1661-1710
Mol wt	215376
Species reactivity	Human, Mouse
Clonality	Polyclonal
Recommended application	WB, ELISA
Concentration	1 mg/ml
Full name	DOCK 180 Antibody
Synonyms	DOCK1; Dedicator of cytokinesis protein 1; 180 kDa protein downstream of CRK; DOCK180

This product is for research use only, not for use in human, therapeutic or diagnostic procedure.

Background

DOCK1 encodes a member of the dedicator of cytokinesis protein family. Dedicator of cytokinesis proteins act as guanine nucleotide exchange factors for small Rho family G proteins. Dedicator of cytokinesis protein 1 regulates the small GTPase Rac, thereby influencing several biological processes, including phagocytosis and cell migration. Overexpression of this gene has also been associated with certain cancers. Alternative splicing results in multiple transcript variants.

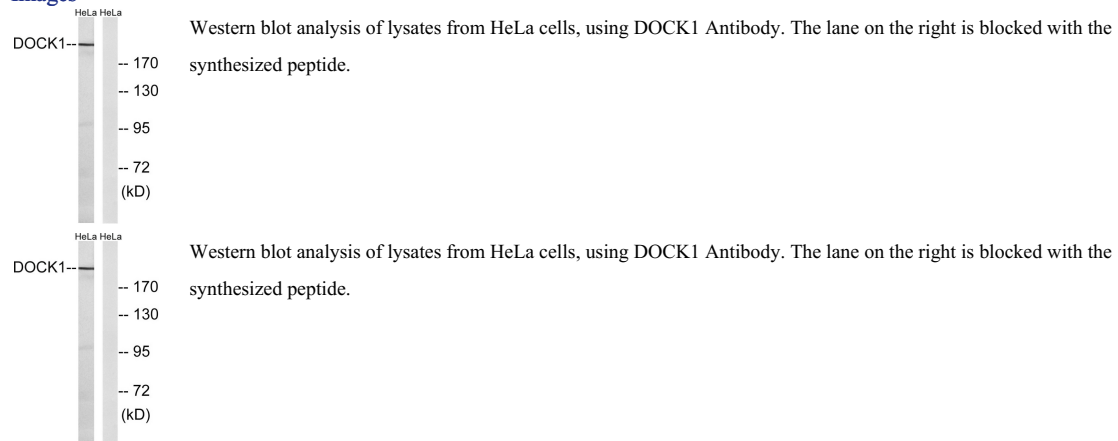
Recommended Dilution

WB: 1: 500 - 1: 2000

ELISA: 1: 40000

Not yet tested in other applications.

Images



Storage

-20°C for one year

501 Changsheng S Rd, Nanhu Dist, Jiaxing, Zhejiang, China

Tel: 86 21 31007137 | E-mail: save@bt-laboratory.com | www.bt-laboratory.com