

Dok-1 Polyclonal Antibody

Description

Product type	Primary Antibody
Code	BT-AP02695
Host	Rabbit
Isotype	IgG
Size	20ul, 50ul, 100ul
Immunogen	The antiserum was produced against synthesized peptide derived from human p62 Dok. AA range:365-414
Mol wt	52392
Species reactivity	Human, Mouse, Rat
Clonality	Polyclonal
Recommended application	WB, IHC-p, ELISA
Concentration	1 mg/ml
Full name	Dok-1 Antibody
Synonyms	DOK1; Docking protein 1; Downstream of tyrosine kinase 1; p62(dok); pp62

This product is for research use only, not for use in human, therapeutic or diagnostic procedure.

Background

Docking protein 1 encoded by DOK1 is part of a signal transduction pathway downstream of receptor tyrosine kinases. The encoded protein is a scaffold protein that helps form a platform for the assembly of multiprotein signaling complexes. Several transcript variants encoding different isoforms have been found for this gene.

Recommended Dilution

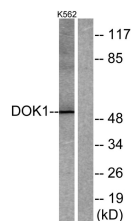
WB: 1: 500 - 1: 2000

IHC: 1: 100 - 1: 300

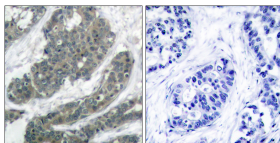
ELISA: 1: 20000

Not yet tested in other applications.

Images



Western blot analysis of lysates from K562 cells, treated with Starvation 24h, using p62 Dok Antibody. The lane on the right is blocked with the synthesized peptide.



Immunohistochemistry analysis of paraffin-embedded human breast carcinoma tissue, using p62 Dok Antibody. The picture on the right is blocked with the synthesized peptide.

Storage

-20°C for one year