

Dok-1 Polyclonal Antibody

Description

Product type	Primary Antibody
Code	BT-AP02696
Host	Rabbit
Isotype	IgG
Size	20ul, 50ul, 100ul
Immunogen	The antiserum was produced against synthesized peptide derived from human p62 Dok. AA range:329-378
Mol wt	52392
Species reactivity	Human, Mouse, Rat
Clonality	Polyclonal
Recommended application	WB, IHC-p, IF, ELISA
Concentration	1 mg/ml
Full name	Dok-1 Antibody
Synonyms	DOK1; Docking protein 1; Downstream of tyrosine kinase 1; p62(dok); pp62

This product is for research use only, not for use in human, therapeutic or diagnostic procedure.

Background

Docking protein 1 encoded by DOK1 is part of a signal transduction pathway downstream of receptor tyrosine kinases. The encoded protein is a scaffold protein that helps form a platform for the assembly of multiprotein signaling complexes. Several transcript variants encoding different isoforms have been found for this gene.

Recommended Dilution

WB: 1: 500 - 1: 2000

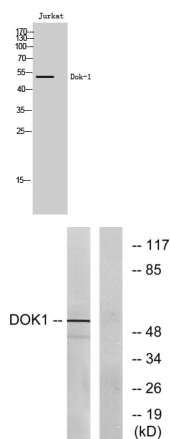
IHC: 1: 100 - 1: 300

IF: 1: 200 - 1: 1000

ELISA: 1: 5000

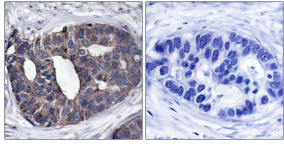
Not yet tested in other applications.

Images



Western Blot analysis of Jurkat cells using Dok-1 Polyclonal Antibody

Western blot analysis of lysates from Jurkat cells, using p62 Dok Antibody. The lane on the right is blocked with the synthesized peptide.



Immunohistochemistry analysis of paraffin-embedded human breast carcinoma tissue, using p62 Dok Antibody. The picture on the right is blocked with the synthesized peptide.

Storage

-20°C for one year

501 Changsheng S Rd, Nanhu Dist, Jiaxing, Zhejiang, China

Tel: 86 21 31007137 | E-mail: save@bt-laboratory.com | www.bt-laboratory.com