

## Dok-2 Polyclonal Antibody

### Description

<b>Product type</b>	Primary Antibody
<b>Code</b>	BT-AP02697
<b>Host</b>	Rabbit
<b>Isotype</b>	IgG
<b>Size</b>	20ul, 50ul, 100ul
<b>Immunogen</b>	The antiserum was produced against synthesized peptide derived from human p56 Dok-2. AA range:316-365
<b>Mol wt</b>	45379
<b>Species reactivity</b>	Human, Mouse
<b>Clonality</b>	Polyclonal
<b>Recommended application</b>	WB, IHC-p, ELISA
<b>Concentration</b>	1 mg/ml
<b>Full name</b>	Dok-2 Antibody
<b>Synonyms</b>	DOK2; Docking protein 2; Downstream of tyrosine kinase 2; p56(dok-2)

This product is for research use only, not for use in human, therapeutic or diagnostic procedure.

### Background

The protein encoded by DOK2 (docking protein 2) is constitutively tyrosine phosphorylated in hematopoietic progenitors isolated from chronic myelogenous leukemia (CML) patients in the chronic phase. It may be a critical substrate for p210 (bcr/abl), a chimeric protein whose presence is associated with CML. This encoded protein binds p120 (RasGAP) from CML cells.

### Recommended Dilution

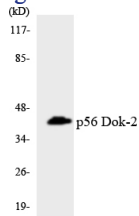
WB: 1: 500 - 1: 2000

IHC: 1: 100 - 1: 300

ELISA: 1: 5000

Not yet tested in other applications.

### Images



Western blot analysis of the lysates from HeLa cells using p56 Dok-2 antibody.

### Storage

-20°C for one year