

Dok-2 Polyclonal Antibody

Description

Product type	Primary Antibody
Code	BT-AP02698
Host	Rabbit
Isotype	IgG
Size	20ul, 50ul, 100ul
Immunogen	The antiserum was produced against synthesized peptide derived from human p56 Dok-2. AA range:266-315
Mol wt	45379
Species reactivity	Human, Mouse
Clonality	Polyclonal
Recommended application	WB, IHC-p, IF, ELISA
Concentration	1 mg/ml
Full name	Dok-2 Antibody
Synonyms	DOK2; Docking protein 2; Downstream of tyrosine kinase 2; p56(dok-2)

This product is for research use only, not for use in human, therapeutic or diagnostic procedure.

Background

The protein encoded by DOK2 (docking protein 2) is constitutively tyrosine phosphorylated in hematopoietic progenitors isolated from chronic myelogenous leukemia (CML) patients in the chronic phase. It may be a critical substrate for p210 (bcr/abl), a chimeric protein whose presence is associated with CML. This encoded protein binds p120 (RasGAP) from CML cells.

Recommended Dilution

WB: 1: 500 - 1: 2000

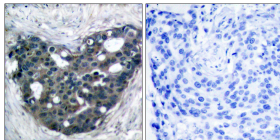
IHC: 1: 100 - 1: 300

IF: 1: 200 - 1: 1000

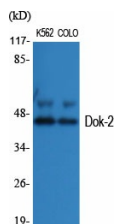
ELISA: 1: 20000

Not yet tested in other applications.

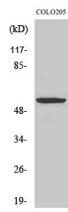
Images



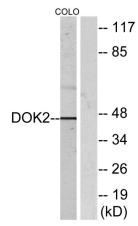
Immunohistochemistry analysis of paraffin-embedded human breast carcinoma tissue, using p56 Dok-2 Antibody. The picture on the right is blocked with the synthesized peptide.



Western Blot analysis of various cells using Dok-2 Polyclonal Antibody



Western Blot analysis of COLO205 cells using Dok-2 Polyclonal Antibody



Western blot analysis of lysates from COLO205, using p56 Dok-2 Antibody. The lane on the right is blocked with the synthesized peptide.

Storage

-20°C for one year

501 Changsheng S Rd, Nanhu Dist, Jiaxing, Zhejiang, China

Tel: 86 21 31007137 | E-mail: save@bt-laboratory.com | www.bt-laboratory.com