

Dok-4 Polyclonal Antibody

Description

Product type	Primary Antibody
Code	BT-AP02700
Host	Rabbit
Isotype	IgG
Size	20ul, 50ul, 100ul
Immunogen	The antiserum was produced against synthesized peptide derived from human DOK4. AA range:11-60
Mol wt	37028
Species reactivity	Human, Mouse
Clonality	Polyclonal
Recommended application	WB, IHC-p, IF, ELISA
Concentration	1 mg/ml
Full name	Dok-4 Antibody
Synonyms	DOK4; Docking protein 4; Downstream of tyrosine kinase 4; Insulin receptor substrate 5; IRS-5; IRSS

This product is for research use only, not for use in human, therapeutic or diagnostic procedure.

Background

The downstream of kinase family (Dok-1-7) are members of a class of docking proteins that interact with receptor tyrosine kinases and, via this interaction, mediate biological responses within the body. Dok-4 (Downstream of kinase-4) is a 326 amino acid protein that contains one PH domain and one IRS-type PTB domain and belongs to the Dok family of interacting proteins. Expressed in a variety of tissues with highest expression in liver, heart, kidney and skeletal muscle, Dok-4 plays an important role in Ret-mediated neurite outgrowth and may link Ret with downstream effectors during neuronal differentiation. Additionally, Dok-4 is thought to play a positive role in the activation of MAPK pathways and may participate in T-cell induced immune system regulation. Overexpression of Dok-4 is associated with clear cell renal cell carcinoma, suggesting a role for Dok-4 in tumorigenesis.

Recommended Dilution

WB: 1: 500 - 1: 2000

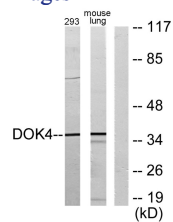
IHC: 1: 100 - 1: 300

IF: 1: 200 - 1: 1000

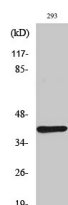
ELISA: 1: 20000

Not yet tested in other applications.

Images



Western blot analysis of lysates from 293 and mouse lung, using DOK4 Antibody. The lane on the right is blocked with the synthesized peptide.



Western Blot analysis of various cells using Dok-4 Polyclonal Antibody

Storage

-20°C for one year

501 Changsheng S Rd, Nanhu Dist, Jiaxing, Zhejiang, China

Tel: 86 21 31007137 | E-mail: save@bt-laboratory.com | www.bt-laboratory.com