

DOR-1 Polyclonal Antibody

Description

Product type	Primary Antibody
Code	BT-AP02705
Host	Rabbit
Isotype	IgG
Size	20ul, 50ul, 100ul
Immunogen	The antiserum was produced against synthesized peptide derived from human OPRD1. AA range:311-360
Mol wt	40413
Species reactivity	Human
Clonality	Polyclonal
Recommended application	WB, ELISA
Concentration	1 mg/ml
Full name	DOR-1 Antibody
Synonyms	OPRD1; OPRD; Delta-type opioid receptor; D-OR-1; DOR-1

This product is for research use only, not for use in human, therapeutic or diagnostic procedure.

Background

OPRD1 (Opioid Receptor Delta 1) is a Protein Coding gene. Diseases associated with OPRD1 include morphine dependence and heroin dependence. Among its related pathways are cGMP-PKG signaling pathway and Peptide ligand-binding receptors. GO annotations related to this gene include G-protein coupled receptor activity and opioid receptor activity. An important paralog of this gene is GALR2.

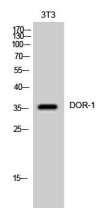
Recommended Dilution

WB: 1: 500 - 1: 2000

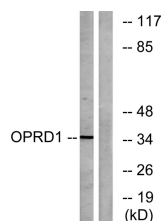
ELISA: 1: 5000

Not yet tested in other applications.

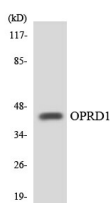
Images



Western Blot analysis of 3T3 cells using DOR-1 Polyclonal Antibody



Western blot analysis of lysates from NIH/3T3 cells, using OPRD1 Antibody. The lane on the right is blocked with the synthesized peptide.



Western blot analysis of the lysates from HT-29 cells using OPRD1 antibody.

Storage

-20°C for one year

501 Changsheng S Rd, Nanhu Dist, Jiaxing, Zhejiang, China

Tel: 86 21 31007137 | E-mail: save@bt-laboratory.com | www.bt-laboratory.com