

Dorfin Polyclonal Antibody

Description

Product type	Primary Antibody
Code	BT-AP02706
Host	Rabbit
Isotype	IgG
Size	20ul, 50ul, 100ul
Immunogen	The antiserum was produced against synthesized peptide derived from human RNF19A. AA range:51-100
Mol wt	90696
Species reactivity	Human, Mouse
Clonality	Polyclonal
Recommended application	WB, ELISA
Concentration	1 mg/ml
Full name	Dorfin Antibody
Synonyms	RNF19A; RNF19; E3 ubiquitin-protein ligase RNF19A; Double ring-finger protein; Dorfin; RING finger protein 19A; p38

This product is for research use only, not for use in human, therapeutic or diagnostic procedure.

Background

RNF19A encodes a member of the ring between ring fingers (RBR) protein family, and the ring finger protein 19A, RBR E3 ubiquitin protein ligase contains two RING-finger motifs and an in between RING fingers motif. This protein is an E3 ubiquitin ligase that is localized to Lewy bodies, and ubiquitylates synphilin-1, which is an interacting protein of alpha synuclein in neurons. The encoded protein may be involved in amyotrophic lateral sclerosis and Parkinson's disease. Alternative splicing results in multiple transcript variants.

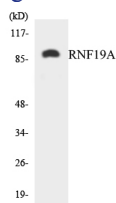
Recommended Dilution

WB: 1: 500 - 1: 2000

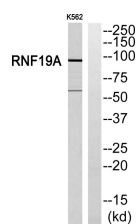
ELISA: 1: 40000

Not yet tested in other applications.

Images



Western blot analysis of the lysates from Jurkat cells using RNF19A antibody.



Western blot analysis of RNF19A Antibody. The lane on the right is blocked with the RNF19A peptide.

Storage

-20°C for one year

501 Changsheng S Rd, Nanhu Dist, Jiaxing, Zhejiang, China

Tel: 86 21 31007137 | E-mail: save@bt-laboratory.com | www.bt-laboratory.com