

Doublecortin Polyclonal Antibody

Description

Product type	Primary Antibody
Code	BT-AP02708
Host	Rabbit
Isotype	IgG
Size	20ul, 50ul, 100ul
Immunogen	The antiserum was produced against synthesized peptide derived from human Doublecortin. AA range:346-395
Mol wt	44925
Species reactivity	Human, Mouse, Rat
Clonality	Polyclonal
Recommended application	WB, ELISA
Concentration	1 mg/ml
Full name	Doublecortin Antibody
Synonyms	DCX; DBCN; LISX; Neuronal migration protein doublecortin; Doublin; Lissencephalin-X; Lis-X

This product is for research use only, not for use in human, therapeutic or diagnostic procedure.

Background

DCX encodes a member of the doublecortin family. Neuronal migration protein doublecortin encoded by DCX is a cytoplasmic protein and contains two doublecortin domains, which bind microtubules. In the developing cortex, cortical neurons must migrate over long distances to reach the site of their final differentiation. The encoded protein appears to direct neuronal migration by regulating the organization and stability of microtubules. In addition, the encoded protein interacts with LIS1, the regulatory gamma subunit of platelet activating factor acetylhydrolase, and this interaction is important to proper microtubule function in the developing cortex. Mutations in this gene cause abnormal migration of neurons during development and disrupt the layering of the cortex, leading to epilepsy, mental retardation, subcortical band heterotopia ("double cortex" syndrome) in females and lissencephaly ("smooth brain" syndrome) in males. Multiple transcript variants encoding different isoforms have been found for this gene.

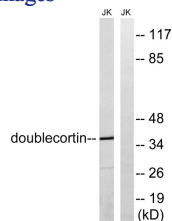
Recommended Dilution

WB: 1: 500 - 1: 2000

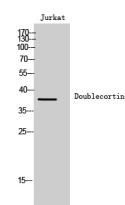
ELISA: 1: 10000

Not yet tested in other applications.

Images



Western blot analysis of lysates from Jurkat cells, using Doublecortin Antibody. The lane on the right is blocked with the synthesized peptide.



Western Blot analysis of Jurkat cells using Doublecortin Polyclonal Antibody

Storage

-20°C for one year

501 Changsheng S Rd, Nanhu Dist, Jiaxing, Zhejiang, China

Tel: 86 21 31007137 | E-mail: save@bt-laboratory.com | www.bt-laboratory.com