

DP-2 Polyclonal Antibody

Description

Product type	Primary Antibody
Code	BT-AP02710
Host	Rabbit
Isotype	IgG
Size	20ul, 50ul, 100ul
Immunogen	The antiserum was produced against synthesized peptide derived from human DP-2. AA range:64-113
Mol wt	49236
Species reactivity	Human, Mouse, Rat, Monkey
Clonality	Polyclonal
Recommended application	WB, ELISA
Concentration	1 mg/ml
Full name	DP-2 Antibody
Synonyms	TFDP2; DP2; Transcription factor Dp-2; E2F dimerization partner 2

This product is for research use only, not for use in human, therapeutic or diagnostic procedure.

Background

TFDP2 is a member of the transcription factor DP family. Transcription factor Dp-2 forms heterodimers with the E2F transcription factors resulting in transcriptional activation of cell cycle regulated genes. Alternative splicing results in multiple transcript variants.

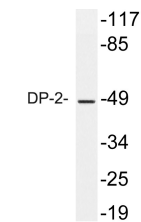
Recommended Dilution

WB: 1: 500 - 1: 2000

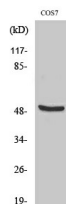
ELISA: 1: 10000

Not yet tested in other applications.

Images



Western blot analysis of lysate from COS7 cells, using DP-2 antibody.



Western Blot analysis of various cells using DP-2 Polyclonal Antibody cells nucleus.

Storage

-20°C for one year