

DPF2 Polyclonal Antibody

Description

Product type	Primary Antibody
Code	BT-AP02711
Host	Rabbit
Isotype	IgG
Size	20ul, 50ul, 100ul
Immunogen	The antiserum was produced against synthesized peptide derived from human REQU. AA range:151-200
Mol wt	44155
Species reactivity	Human, Mouse
Clonality	Polyclonal
Recommended application	WB, IHC-p, IF, ELISA
Concentration	1 mg/ml
Full name	DPF2 Antibody
Synonyms	DPF2; BAF45D; REQ; UBID4; Zinc finger protein ubi-d4; Apoptosis response zinc finger protein; BRG1-associated factor 45D; BAF45D; D4; zinc and double PHD fingers family 2; Protein requiem

This product is for research use only, not for use in human, therapeutic or diagnostic procedure.

Background

Double PHD fingers 2 encoded by DPF2 is a member of the d4 domain family, characterized by a zinc finger-like structural motif. This protein functions as a transcription factor which is necessary for the apoptotic response following deprivation of survival factors. It likely serves a regulatory role in rapid hematopoietic cell growth and turnover. DPF2 is considered a candidate gene for multiple endocrine neoplasia type 1, an inherited cancer syndrome involving multiple parathyroid, enteropancreatic, and pituitary tumors.

Recommended Dilution

WB: 1: 500 - 1: 2000

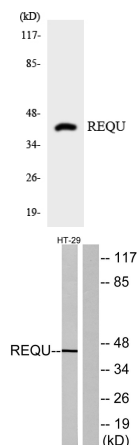
IHC: 1: 100 - 1: 300

IF: 1: 200 - 1: 1000

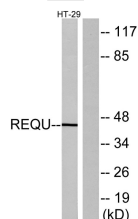
ELISA: 1: 10000

Not yet tested in other applications.

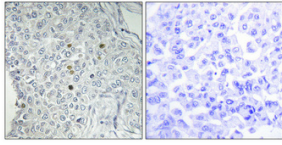
Images



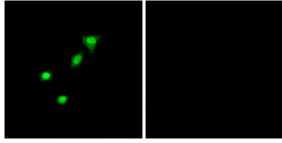
Western blot analysis of the lysates from RAW264.7 cells using REQU antibody.



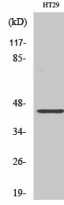
Western blot analysis of lysates from HT-29 cells, using REQU Antibody. The lane on the right is blocked with the synthesized peptide.



Immunohistochemical analysis of paraffin-embedded Human breast cancer. Antibody was diluted at 1:100(4° overnight). High-pressure and temperature Tris-EDTA,pH8.0 was used for antigen retrieval. Negative control (right) obtained from antibody was pre-absorbed by immunogen peptide.



Immunofluorescence analysis of A549 cells, using REQU Antibody. The picture on the right is blocked with the synthesized peptide.



Western Blot analysis of various cells using DPF2 Polyclonal Antibody

Storage

-20°C for one year

501 Changsheng S Rd, Nanhu Dist, Jiaxing, Zhejiang, China

Tel: 86 21 31007137 | E-mail: save@bt-laboratory.com | www.bt-laboratory.com