

## DQX1 Polyclonal Antibody

### Description

<b>Product type</b>	Primary Antibody
<b>Code</b>	BT-AP02723
<b>Host</b>	Rabbit
<b>Isotype</b>	IgG
<b>Size</b>	20ul, 50ul, 100ul
<b>Immunogen</b>	The antiserum was produced against synthesized peptide derived from human DQX1. AA range:551-600
<b>Mol wt</b>	79476
<b>Species reactivity</b>	Human, Mouse, Monkey
<b>Clonality</b>	Polyclonal
<b>Recommended application</b>	WB, ELISA
<b>Concentration</b>	1 mg/ml
<b>Full name</b>	DQX1 Antibody
<b>Synonyms</b>	DQX1; ATP-dependent RNA helicase DQX1; DEAQ box polypeptide 1

**This product is for research use only, not for use in human, therapeutic or diagnostic procedure.**

### Background

DQX1 (DEAQ box RNA-dependent ATPase 1), also known as FLJ23757, is a 71 amino acid protein that contains one helicase ATP-binding domain and one helicase C-terminal domain. Localized to the nucleus, DQX1 catalyzes the conversion of ATP to ADP and a phosphate. Expressed as three isoforms produced by alternative splicing events, DQX1 is encoded by a gene that maps to human chromosome 2. As the second largest human chromosome, chromosome 2 makes up approximately 8% of the human genome and contains 237 million bases encoding over 1,400 genes. A number of genetic diseases are linked to genes on chromosome 2, including Harlequin ichthyosis, sitosterolemia and Alström syndrome.

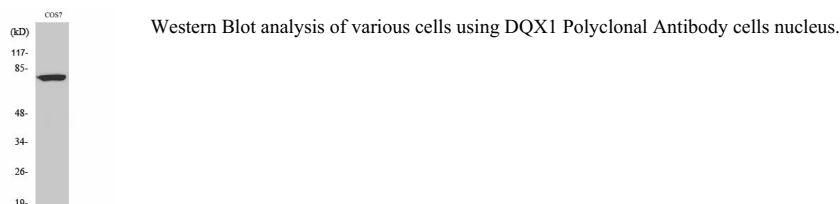
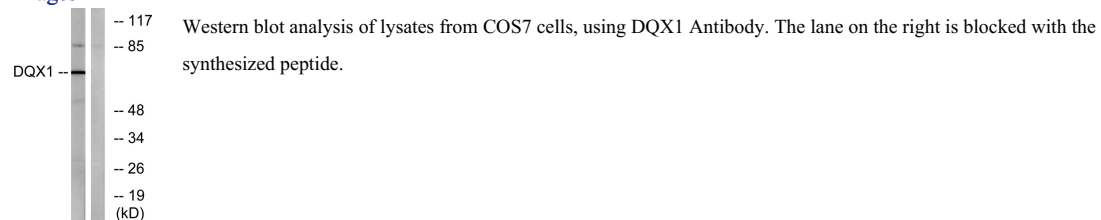
### Recommended Dilution

WB: 1: 500 - 1: 2000

ELISA: 1: 20000

Not yet tested in other applications.

### Images



## Storage

-20°C for one year

501 Changsheng S Rd, Nanhu Dist, Jiaxing, Zhejiang, China

Tel: 86 21 31007137 | E-mail: [save@bt-laboratory.com](mailto:save@bt-laboratory.com) | [www.bt-laboratory.com](http://www.bt-laboratory.com)