

DRA Polyclonal Antibody

Description

Product type	Primary Antibody
Code	BT-AP02727
Host	Rabbit
Isotype	IgG
Size	20ul, 50ul, 100ul
Immunogen	Synthesized peptide derived from the C-terminal region of human DRA.
Mol wt	84505
Species reactivity	Human, Mouse, Rat
Clonality	Polyclonal
Recommended application	WB, ELISA
Concentration	1 mg/ml
Full name	DRA Antibody
Synonyms	SLC26A3; DRA; Chloride anion exchanger; Down-regulated in adenoma; Protein DRA; Solute carrier family 26 member 3

This product is for research use only, not for use in human, therapeutic or diagnostic procedure.

Background

Chloride anion exchanger encoded by SLC26A3 is a transmembrane glycoprotein that transports chloride ions across the cell membrane in exchange for bicarbonate ions. It is localized to the mucosa of the lower intestinal tract, particularly to the apical membrane of columnar epithelium and some goblet cells. The protein is essential for intestinal chloride absorption, and mutations in this gene have been associated with congenital chloride diarrhea.

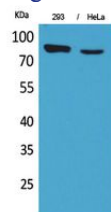
Recommended Dilution

WB: 1: 500 - 1: 2000

ELISA: 1: 20000

Not yet tested in other applications.

Images



Western Blot analysis of 293, HeLa cells using DRA Polyclonal Antibody. Secondary antibody was diluted at 1:20000

Storage

-20°C for one year