

FRA1(Phospho-Ser265) Rabbit Polyclonal Antibody

Description

Product type	Primary Antibody
Code	BT-AP02731
Host	Rabbit
Isotype	IgG
Size	100ul, 50ul, 20ul
Immunogen	Synthesized phosho peptide around human FRA1 (Ser265)
Mol wt	N/A
Species reactivity	Human, Mouse, Rat
Clonality	Polyclonal
Recommended application	WB
Concentration	1 mg/ml
Full name	FRA1
Synonyms	FRA1 ;Ser265 ; Fos-related antigen 1; FRA-1

This product is for research use only, not for use in human, therapeutic or diagnostic procedure.

Background

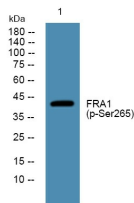
The Fos gene family consists of 4 members: FOS| FOSB| FOSL1| and FOSL2. These genes encode leucine zipper proteins that can dimerize with proteins of the JUN family| thereby forming the transcription factor complex AP-1. As such| the FOS proteins have been implicated as regulators of cell proliferation| differentiation| and transformation. Several transcript variants encoding different isoforms have been found for this gene.

Recommended Dilution

WB: 1: 1000 - 1: 2000

Not yet tested in other applications.

Images



Western blot analysis of lysates from DU145 cells, primary antibody was diluted at 1:1000, 4°C overnight

Storage

-20°C for 1 year