

## DRS-1 Polyclonal Antibody

### Description

<b>Product type</b>	Primary Antibody
<b>Code</b>	BT-AP02735
<b>Host</b>	Rabbit
<b>Isotype</b>	IgG
<b>Size</b>	20ul, 50ul, 100ul
<b>Immunogen</b>	The antiserum was produced against synthesized peptide derived from human PECL. AA range:73-122
<b>Mol wt</b>	39609
<b>Species reactivity</b>	Human
<b>Clonality</b>	Polyclonal
<b>Recommended application</b>	WB, IHC-p, ELISA
<b>Concentration</b>	1 mg/ml
<b>Full name</b>	DRS-1 Antibody
<b>Synonyms</b>	ECI2; DRS1; HCA88; PECL; Enoyl-CoA delta isomerase 2; mitochondrial; DRS-1; Delta(3),delta(2)-enoyl-CoA isomerase; D3,D2-enoyl-CoA isomerase; Diazepam-binding inhibitor-related protein 1; DBI-related

**This product is for research use only, not for use in human, therapeutic or diagnostic procedure.**

### Background

ECI2 encodes a member of the hydratase/isomerase superfamily. Enoyl-CoA delta isomerase 2 is a key mitochondrial enzyme involved in beta-oxidation of unsaturated fatty acids. It catalyzes the transformation of 3-cis and 3-trans-enoyl-CoA esters arising during the stepwise degradation of cis-, mono-, and polyunsaturated fatty acids to the 2-trans-enoyl-CoA intermediates. Alternatively spliced transcript variants have been described.

### Recommended Dilution

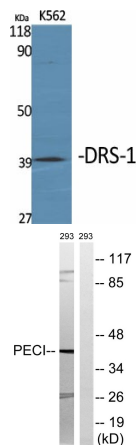
WB: 1: 500 - 1: 2000

IHC: 1: 100 - 1: 300

ELISA: 1: 20000

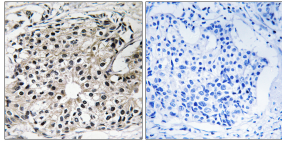
Not yet tested in other applications.

### Images

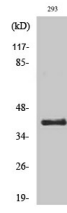


Western Blot analysis of various cells using DRS-1 Polyclonal Antibody

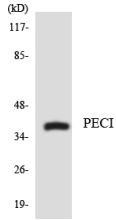
Western blot analysis of lysates from 293 cells, using PECL Antibody. The lane on the right is blocked with the synthesized peptide.



Immunohistochemistry analysis of paraffin-embedded human breast carcinoma tissue, using Peci Antibody. The picture on the right is blocked with the synthesized peptide.



Western Blot analysis of 293 cells using DRS-1 Polyclonal Antibody



Western blot analysis of the lysates from COLO205 cells using Peci antibody.

### Storage

-20°C for one year

501 Changsheng S Rd, Nanhu Dist, Jiaxing, Zhejiang, China

Tel: 86 21 31007137 | E-mail: [save@bt-laboratory.com](mailto:save@bt-laboratory.com) | [www.bt-laboratory.com](http://www.bt-laboratory.com)