

DSCR 1 Polyclonal Antibody

Description

Product type	Primary Antibody
Code	BT-AP02740
Host	Rabbit
Isotype	IgG
Size	20ul, 50ul, 100ul
Immunogen	The antiserum was produced against synthesized peptide derived from human RCAN1. AA range:201-250
Mol wt	22637
Species reactivity	Human, Mouse, Rat
Clonality	Polyclonal
Recommended application	WB, ELISA
Concentration	1 mg/ml
Full name	DSCR 1 Antibody
Synonyms	RCAN1; ADAPT78; CSP1; DSC1; DSCR1; Calcipressin-1; Adapt78; Down syndrome critical region protein 1; Myocyte-enriched calcineurin-interacting protein 1; MCIP1; Regulator of calcineurin 1

This product is for research use only, not for use in human, therapeutic or diagnostic procedure.

Background

Regulator of calcineurin 1 encoded by RCAN1 interacts with calcineurin A and inhibits calcineurin-dependent signaling pathways, possibly affecting central nervous system development. This gene is located in the minimal candidate region for the Down syndrome phenotype, and is overexpressed in the brain of Down syndrome fetuses. Chronic overexpression of RCAN1 may lead to neurofibrillary tangles such as those associated with Alzheimer disease. Alternative splicing results in multiple transcript variants.

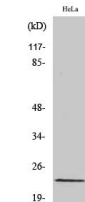
Recommended Dilution

WB: 1: 500 - 1: 2000

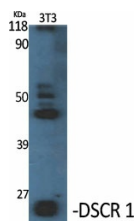
ELISA: 1: 10000

Not yet tested in other applications.

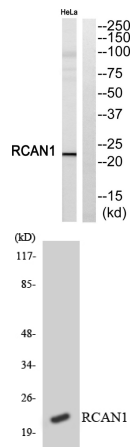
Images



Western Blot analysis of HeLa cells using DSCR 1 Polyclonal Antibody diluted at 1:1000



Western Blot analysis of various cells using DSCR 1 Polyclonal Antibody diluted at 1:1000



Western blot analysis of RCAN1 Antibody. The lane on the right is blocked with the RCAN1 peptide.

Western blot analysis of the lysates from HT-29 cells using RCAN1 antibody.

Storage

-20°C for one year

501 Changsheng S Rd, Nanhu Dist, Jiaxing, Zhejiang, China

Tel: 86 21 31007137 | E-mail: save@bt-laboratory.com | www.bt-laboratory.com