

Dsg2 Polyclonal Antibody

Description

Product type	Primary Antibody
Code	BT-AP02743
Host	Rabbit
Isotype	IgG
Size	20ul, 50ul, 100ul
Immunogen	The antiserum was produced against synthesized peptide derived from human DSG2. AA range:401-450
Mol wt	122294
Species reactivity	Human
Clonality	Polyclonal
Recommended application	WB, ELISA
Concentration	1 mg/ml
Full name	Dsg2 Antibody
Synonyms	DSG2; CDHF5; Desmoglein-2; Cadherin family member 5; HDGC

This product is for research use only, not for use in human, therapeutic or diagnostic procedure.

Background

DSG2 encodes a member of the desmoglein family and cadherin cell adhesion molecule superfamily of proteins. Desmogleins are calcium-binding transmembrane glycoprotein components of desmosomes, cell-cell junctions between epithelial, myocardial, and other cell types. The encoded preproprotein is proteolytically processed to generate the mature glycoprotein. DSG2 is present in a gene cluster with other desmoglein gene family members on chromosome 18. Mutations in this gene have been associated with arrhythmogenic right ventricular dysplasia, familial, 10.

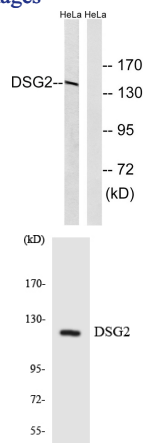
Recommended Dilution

WB: 1: 500 - 1: 2000

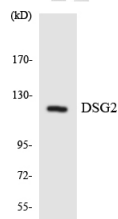
ELISA: 1: 40000

Not yet tested in other applications.

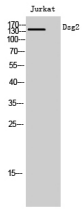
Images



Western blot analysis of lysates from HeLa cells, using DSG2 Antibody. The lane on the right is blocked with the synthesized peptide.



Western blot analysis of the lysates from HUVEC cells using DSG2 antibody.



Western Blot analysis of Jurkat cells using Dsg2 Polyclonal Antibody

Storage

-20°C for one year

501 Changsheng S Rd, Nanhu Dist, Jiaxing, Zhejiang, China

Tel: 86 21 31007137 | E-mail: save@bt-laboratory.com | www.bt-laboratory.com