

## Duo Polyclonal Antibody

### Description

Product type	Primary Antibody
Code	BT-AP02749
Host	Rabbit
Isotype	IgG
Size	20ul, 50ul, 100ul
Immunogen	Synthesized peptide derived from Duo . at AA range: 810-890
Mol wt	340174
Species reactivity	Human, Mouse, Rat
Clonality	Polyclonal
Recommended application	WB, ELISA
Concentration	1 mg/ml
Full name	Duo Antibody
Synonyms	KALRN; DUET; DUO; HAPIP; TRAD; Kalirin; Huntingtin-associated protein-interacting protein; Protein Duo; Serine/threonine-protein kinase with Dbl- and pleckstrin homology domain

This product is for research use only, not for use in human, therapeutic or diagnostic procedure.

### Background

Huntington's disease (HD), a neurodegenerative disorder characterized by loss of striatal neurons, is caused by an expansion of a polyglutamine tract in the HD protein huntingtin. KALRN (kalirin, RhoGEF kinase) encodes a protein that interacts with the huntingtin-associated protein 1, which is a huntingtin binding protein that may function in vesicle trafficking.

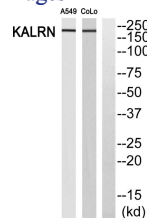
### Recommended Dilution

WB: 1: 500 - 1: 2000

ELISA: 1: 20000

Not yet tested in other applications.

### Images



Western blot analysis of KALRN Antibody. The lane on the right is blocked with the KALRN peptide.

### Storage

-20°C for one year