

DUS2L Polyclonal Antibody

Description

Product type	Primary Antibody
Code	BT-AP02752
Host	Rabbit
Isotype	IgG
Size	20ul, 50ul, 100ul
Immunogen	The antiserum was produced against synthesized peptide derived from human DUS2L. AA range:421-470
Mol wt	55050
Species reactivity	Human, Mouse
Clonality	Polyclonal
Recommended application	WB, IHC-p, ELISA
Concentration	1 mg/ml
Full name	DUS2L Antibody
Synonyms	DUS2L; DUS2; tRNA-dihydrouridine(20) synthase [NAD(P)+]-like; Up-regulated in lung cancer protein 8; URLC8; tRNA-dihydrouridine synthase 2-like; hDUS2

This product is for research use only, not for use in human, therapeutic or diagnostic procedure.

Background

DUS2 (dihydrouridine synthase 2) encodes a cytoplasmic protein that catalyzes the conversion of uridine residues to dihydrouridine in the D-loop of tRNA. The resulting modified bases confer enhanced regional flexibility to tRNA. The encoded protein may increase the rate of translation by inhibiting an interferon-induced protein kinase. DUS2 has been implicated in pulmonary carcinogenesis. Alternatively spliced transcript variants have been described for DUS2.

Recommended Dilution

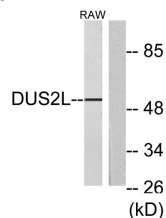
WB: 1: 500 - 1: 2000

IHC: 1: 100 - 1: 300

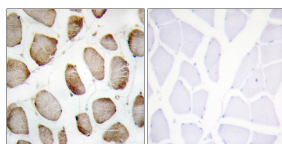
ELISA: 1: 20000

Not yet tested in other applications.

Images



Western blot analysis of lysates from RAW264.7 cells, using DUS2L Antibody. The lane on the right is blocked with the synthesized peptide.



Immunohistochemistry analysis of paraffin-embedded human skeletal muscle tissue, using DUS2L Antibody. The picture on the right is blocked with the synthesized peptide.

Storage

-20°C for one year

501 Changsheng S Rd, Nanhu Dist, Jiaxing, Zhejiang, China

Tel: 86 21 31007137 | E-mail: save@bt-laboratory.com | www.bt-laboratory.com